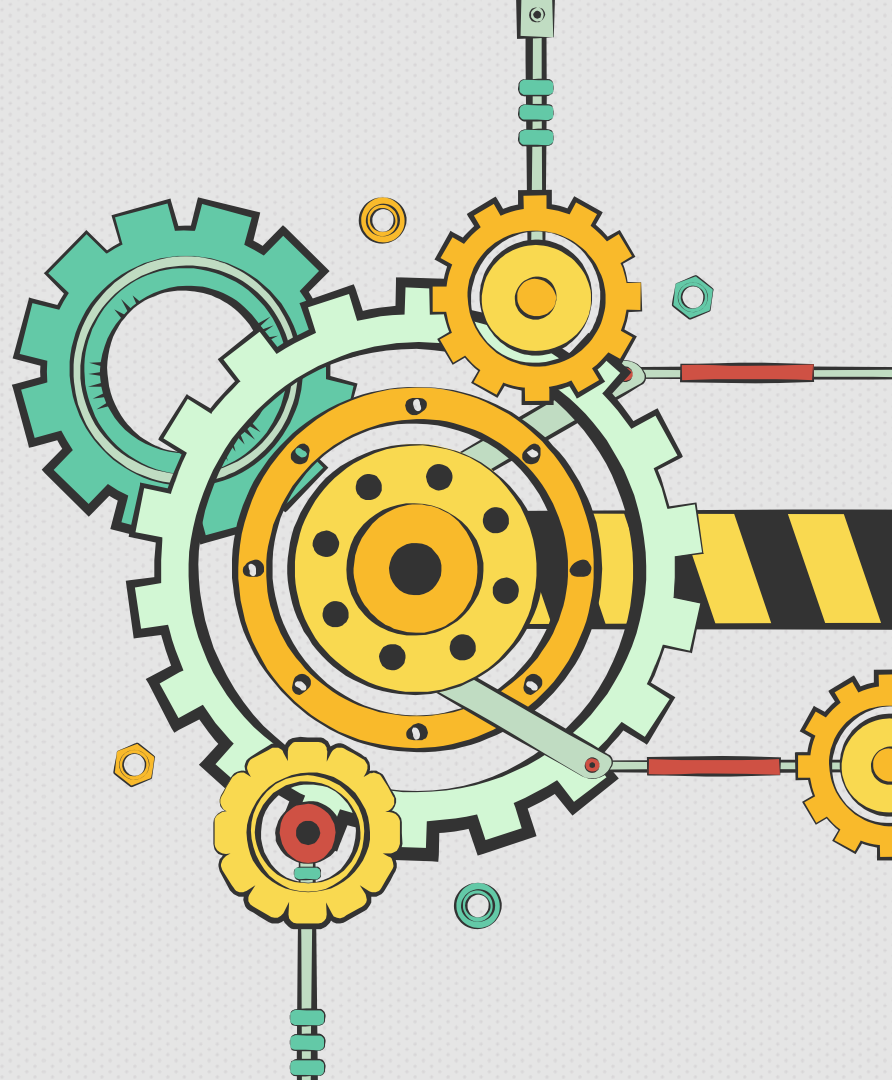


Eterna's Diechase Update



Previous Condition

Eterna's diechase encountered movement while on-lock motion which causes problem on misalign cut. Prior this incident, the diechase stays in place even when operators pull it forcefully.



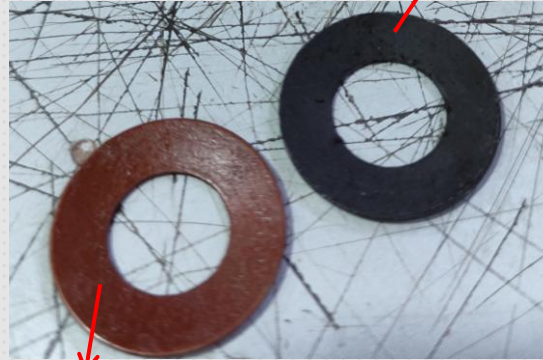
Die chase is on-lock motion but is not locked properly.

Die chase should be locked when the button is not switched on.

Previous Condition



Old and worn out diechase spring



New spring

Old spring

*The spring should have a plate-like curve to support its spring-motion, the old spring lost this shape due to being worn-out.



Old metal bar on the cylinder with scratches

New metal bar

*The metal bar that connects the spring on the diechase was also replaced as the old already has scratches.

Caledonian visited KPPI yesterday, July 31, to conduct fixing of the diechase springs.

- Installation of the 6 springs started @1345H.
- Trial Run commenced @1930H and based on observation, the diechase now stays in place even with application of forceful pulling. Also, there was no movement on the diechase during running, however it will stay under observational status for other problems that may occur.

